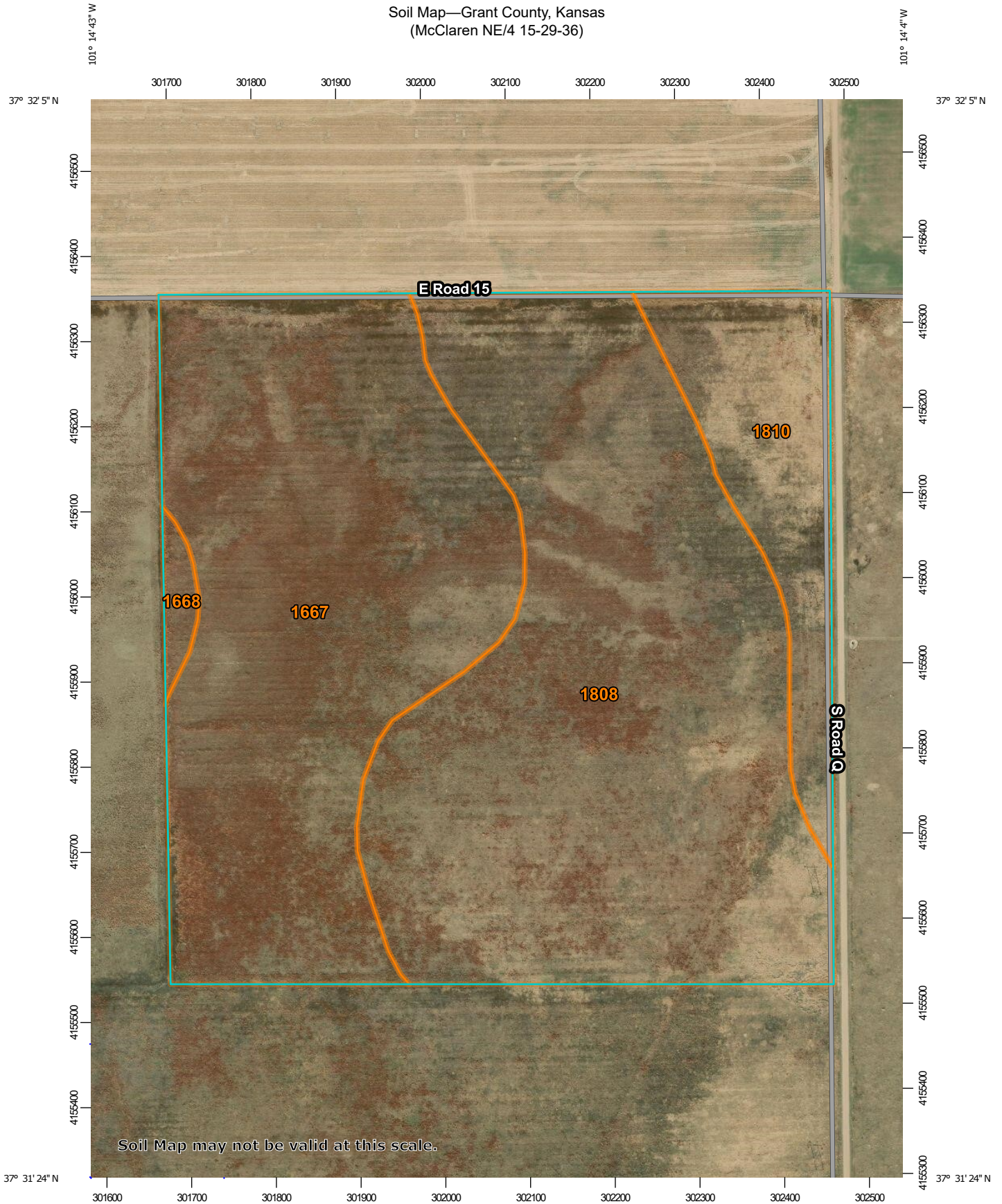


Soil Map—Grant County, Kansas
(McClaren NE/4 15-29-36)



Map Scale: 1:6,180 if printed on A portrait (8.5" x 11") sheet.


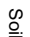





0 50 100 200 300 Meters

0 300 600 1200 1800 Feet

Map projection: Web Mercator Corner coordinates: WGS84 Edge ticks: UTM Zone 14N WGS84



MAP LEGEND

	Area of Interest (AOI)		Spoil Area
	Area of Interest (AOI)		Stony Spot
	Soils		Very Stony Spot
	Soil Map Unit Polygons		Wet Spot
	Soil Map Unit Lines		Other
	Soil Map Unit Points		Special Line Features
Special Point Features			
	Blowout	Water Features	
	Borrow Pit		Streams and Canals
	Clay Spot	Transportation	
	Closed Depression		Rails
	Gravel Pit		Interstate Highways
	Gravelly Spot		US Routes
	Landfill		Major Roads
	Lava Flow		Local Roads
	Marsh or swamp	Background	
	Mine or Quarry		Aerial Photography
	Miscellaneous Water		
	Perennial Water		
	Rock Outcrop		
	Saline Spot		
	Sandy Spot		
	Severely Eroded Spot		
	Sinkhole		
	Slide or Slip		
	Sodic Spot		

MAP INFORMATION

The soil surveys that comprise your AOI were mapped at 1:24,000.

Warning: Soil Map may not be valid at this scale.

Enlargement of maps beyond the scale of mapping can cause misunderstanding of the detail of mapping and accuracy of soil line placement. The maps do not show the small areas of contrasting soils that could have been shown at a more detailed scale.

Please rely on the bar scale on each map sheet for map measurements.

Source of Map: Natural Resources Conservation Service
Web Soil Survey URL:
Coordinate System: Web Mercator (EPSG:3857)

Maps from the Web Soil Survey are based on the Web Mercator projection, which preserves direction and shape but distorts distance and area. A projection that preserves area, such as the Albers equal-area conic projection, should be used if more accurate calculations of distance or area are required.

This product is generated from the USDA-NRCS certified data as of the version date(s) listed below.

Soil Survey Area: Grant County, Kansas
Survey Area Data: Version 15, Sep 12, 2018

Soil map units are labeled (as space allows) for map scales 1:50,000 or larger.

Date(s) aerial images were photographed: Feb 17, 2014—Jun 8, 2017

The orthophoto or other base map on which the soil lines were compiled and digitized probably differs from the background imagery displayed on these maps. As a result, some minor shifting of map unit boundaries may be evident.

Map Unit Legend

Map Unit Symbol	Map Unit Name	Acres in AOI	Percent of AOI
1667	Manter fine sandy loam, 0 to 1 percent slopes	62.7	39.5%
1668	Manter fine sandy loam, 1 to 3 percent slopes	1.5	1.0%
1808	Satanta fine sandy loam, 0 to 1 percent slopes	78.0	49.1%
1810	Satanta loam, 0 to 1 percent slopes	16.5	10.4%
Totals for Area of Interest		158.7	100.0%